

# BOUNDARY COUNTY COMMISSIONER DISTRICTS

289887

## Resolution 2022- 7 A Resolution Establishing Commissioner Districts

WHEREAS, Idaho Code 31-704 requires the board of commissioners to district their county into three districts at the regular meeting in January preceding any general election into three districts, as nearly equal in population as may be, to be known as county commissioners' districts numbers one (1), two (2) and three (3); and

NOW THEREFORE, upon motion duly made, seconded, and unanimously carried,

IT IS HEREBY RESOLVED that the Board of County Commissioners, County of Boundary, State of Idaho establish the following commissioner districts based on the 2020 Census:

### Boundary County Commissioner Districts – 2022

#### District 1

Beginning at the intersection of the Boundary-Bonner County Line and the centerline of U.S. Highway 95 & 2 (Hwy 95); thence northerly along the centerline of Hwy 95 to the overpass intersection with the centerline of the Union Pacific Railroad (UPRR) near Naples; thence northerly along the centerline of the UPRR to the intersection with the centerline of Deep Creek Loop, a County road; thence northerly and easterly along the centerline of Deep Creek Loop to the underpass intersection with the centerline of the Burlington Northern Santa Fe Railroad (BNSF) near the golf course; thence northerly along the centerline of the BNSF to the overpass intersection with Hwy 95 in Bonners Ferry; thence northerly along the centerline of Hwy 95 to the intersection with the centerline of State Highway 1 (Hwy 1); thence northerly along the centerline of Hwy 1 to the intersection with the United States – Canada International Boundary Line; thence west along said International Boundary Line to the Idaho – Washington State Boundary Line; thence south along said State Boundary Line to the intersection with the Boundary – Bonner County Line; thence east along said County Line; thence south along said County Line; thence east along said County Line to the intersection with the centerline of Hwy 95 and the place of beginning.

#### District 2

Beginning at the intersection of the centerline of State Highway 1 (Hwy 1) and the United States – Canada International Boundary Line; thence east along said International Boundary Line to the Idaho – Montana State Boundary Line; thence south along said State Boundary Line to the intersection with the centerline of the Kootenai River; thence northerly and westerly along the centerline of the Kootenai River to the intersection with the centerline of U.S. Highway 95 (Hwy 95); thence northerly along the centerline of Hwy 95 to the intersection with the centerline of Hwy 1; thence northerly along the centerline of Hwy 1 to the intersection with the United States – Canada International Boundary Line and the place of beginning.

#### District 3

Beginning at the intersection of the Boundary-Bonner County Line and the centerline of U.S. Highway 95 & 2 (Hwy 95); thence northerly along the centerline of Hwy 95 to the overpass intersection with the centerline of the Union Pacific Railroad (UPRR) near Naples; thence northerly along the centerline of the UPRR to the intersection with the centerline of Deep Creek Loop, a County road; thence northerly and easterly along the centerline of Deep Creek Loop to the underpass intersection with the centerline of the Burlington Northern Santa Fe Railroad (BNSF) near the golf course; thence northerly along the centerline of the BNSF to the overpass intersection with Hwy 95 in Bonners Ferry; thence northerly along the centerline of Hwy 95 to the intersection with the centerline of State Highway 1 (Hwy 1); thence northerly along the centerline of Hwy 1 to the intersection with the United States – Canada International Boundary Line to the Idaho – Montana State Boundary Line; thence south along said State Boundary Line to the Boundary – Bonner County Line; thence west along said County Line to the intersection with the centerline of Hwy 95 and the place of beginning.

DATED this 3<sup>rd</sup> day of January, 2022

COUNTY OF BOUNDARY  
BOARD OF COMMISSIONERS

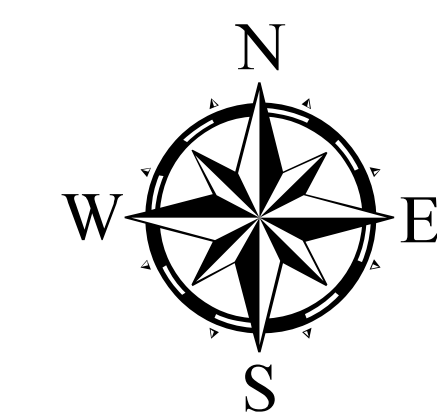
*Dan R. Dinning*  
Dan R. Dinning, Chairman

*Wally Cossart*  
Wally Cossart, Commissioner

*Tim Bertling*  
Tim Bertling, Commissioner

ATTEST:

*Glenda Poston*  
GLENDA POSTON, Clerk of the Board of County Commissioners



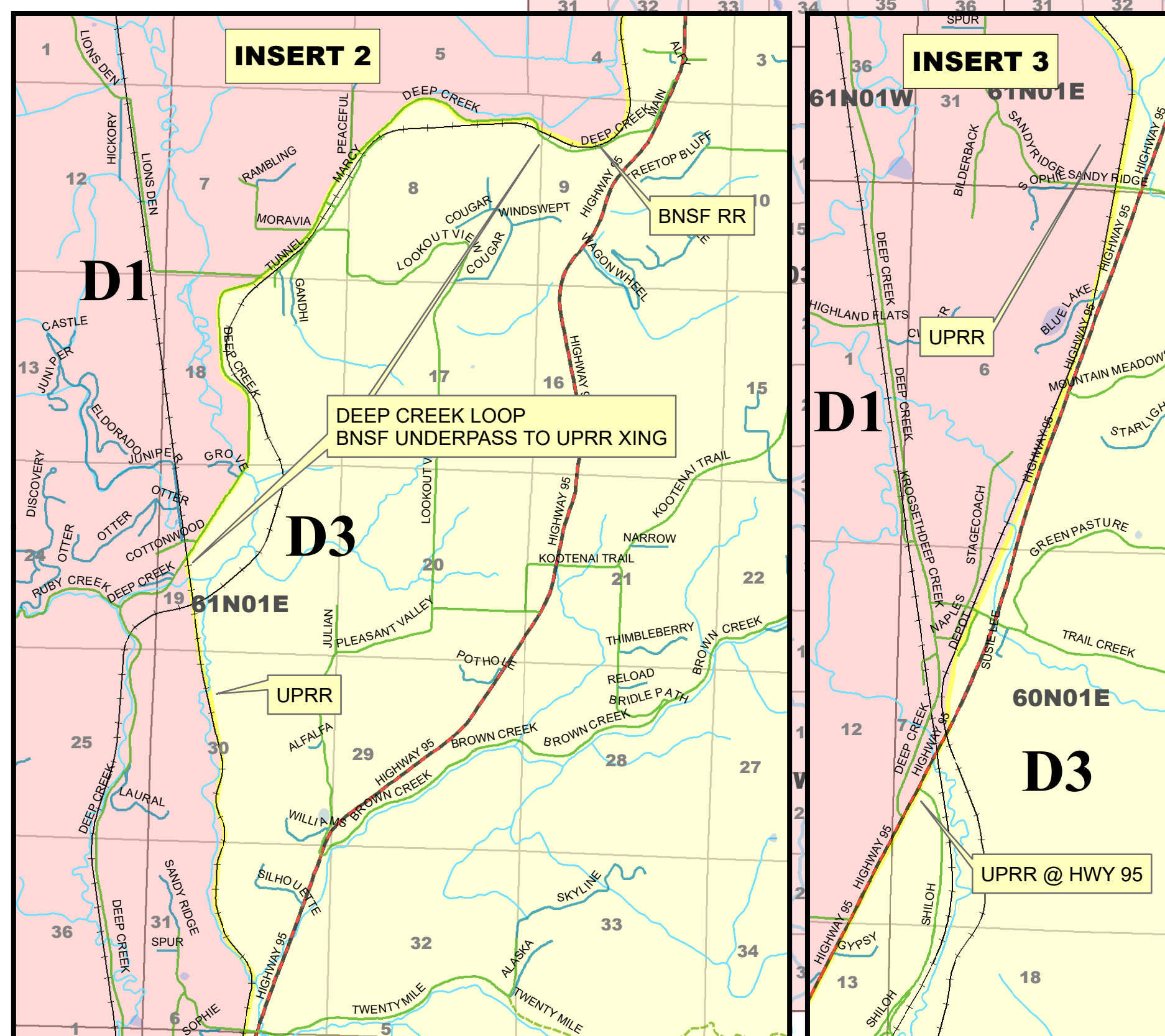
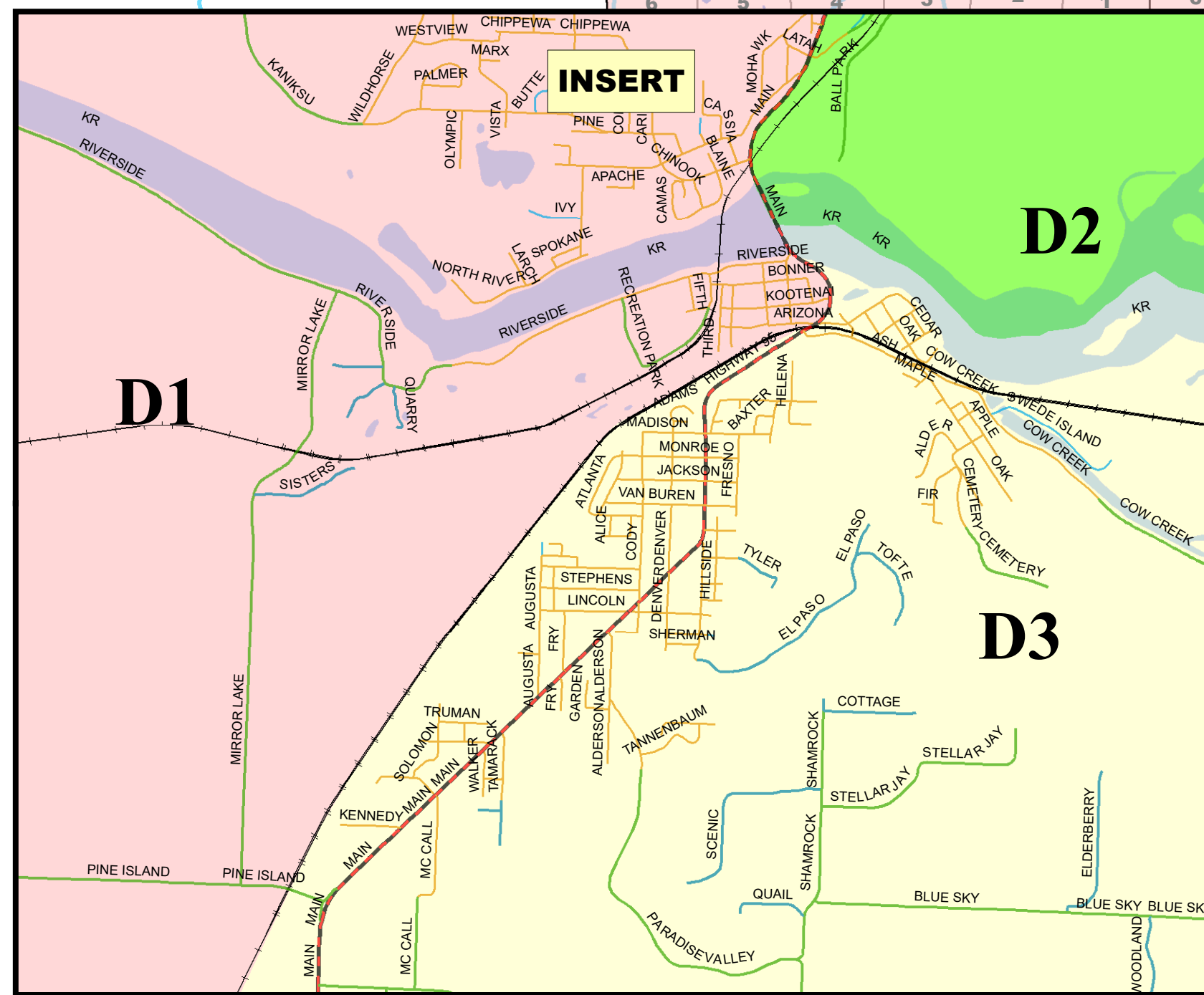
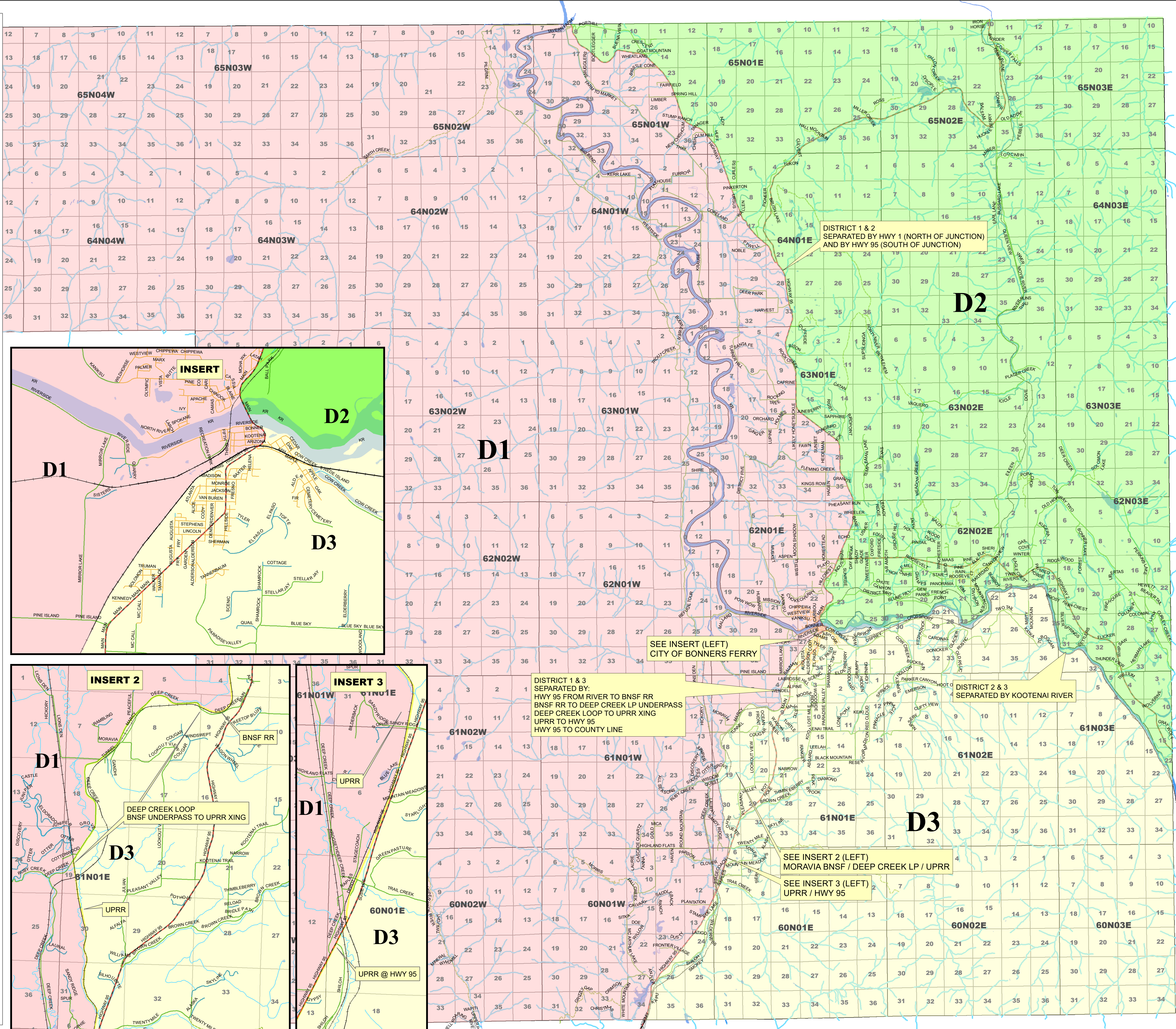
STATE OF IDAHO  
County of Boundary  
Filed by: *[Signature]*  
on: 1/19/2022 2:45 pm  
Glenda Poston  
County Recorder  
By Deputy  
Fee \$ *[Signature]*  
Mail to *[Signature]*

### COMMISSIONER DISTRICTS

- DISTRICT 1 : 2020 CENSUS POPULATION 4015
- DISTRICT 2 : 2020 CENSUS POPULATION 4032
- DISTRICT 3 : 2020 CENSUS POPULATION 4009

THIS MAP IS PROVIDED FOR INFORMATIONAL PURPOSES ONLY. EVERY EFFORT HAS BEEN MADE TO ENSURE ACCURACY AND COMPLETENESS. THIS COUNTY WILL IN NO WAY BE HELD RESPONSIBLE FOR ANY ERRORS OR OMISSIONS AND ASSUMES NO RESPONSIBILITY FOR PROVIDING UPDATES OR CORRECTIONS.

File Name: Print\_COMMISH-Dist  
Date Printed: 1/19/2022 by ODrake



DISTRICT 1 & 3  
SEPARATED BY:  
HWY 95 FROM RIVER TO BNSF RR  
BNSF RR TO DEEP CREEK LP UNDERPASS  
DEEP CREEK LOOP TO UPRR KING  
UPRR TO HWY 95  
HWY 95 TO COUNTY LINE

DISTRICT 1 & 2  
SEPARATED BY HWY 1 (NORTH OF JUNCTION)  
AND BY HWY 95 (SOUTH OF JUNCTION)

DISTRICT 2 & 3  
SEPARATED BY KOOTENAI RIVER

SEE INSERT 2 (LEFT)  
MORAVIA BNSF / DEEP CREEK LP / UPRR

SEE INSERT 3 (LEFT)  
UPRR / HWY 95

SEE INSERT (LEFT)  
CITY OF BONNERS FERRY